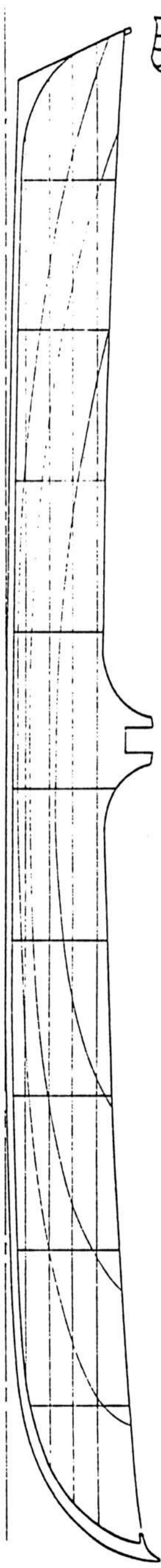
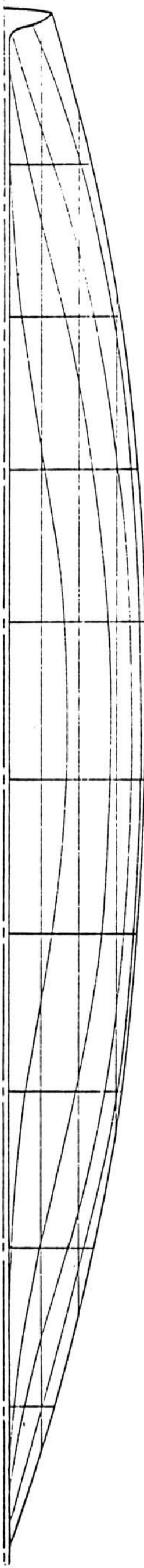


2



SHEER PLAN

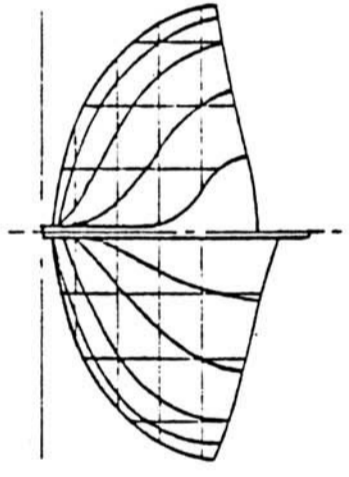


HALF BREADTH PLAN

Stations 2'1" apart. Lines to inside of planking.
Waterlines spaced 4" apart starting 3" above base line.
Buttock lines spaced 6" apart starting at centre line.

TABLE of OFFSETS.

Station	Fronted	9	8	7	6	5	4	3	2	1	Bow
Sheer	1-7-1	1-5-6	1-4-6	1-4-2	1-3-7	1-3-6	1-4-3	1-5-2	1-6-4	1-7-7	1-9-7
Butt C	-	-	1-4-6	0-11-7	0-8-6	0-7-7	0-9-1	1-4-0	-	-	-
Butt B	-	1-3-4	0-9-2	0-5-6	0-4-0	0-3-5	0-4-4	0-6-7	1-2-1	-	-
Butt A	1-5-0	0-9-6	0-5-4	0-3-1	0-1-7	0-1-6	0-2-2	0-3-6	0-7-0	1-3-6	-
Keel	0-2-2	0-1-2	0-1-0	0-0-4	Some as base line	Some as base line	Some as base line	0-0-4	0-1-2	0-2-4	-
Sheer	0-7-3	1-1-2	1-6-0	1-8-3	1-9-4	1-9-6	1-8-2	1-5-7	1-1-2	0-6-6	-
W/L IV	0-3-5	1-0-0	1-5-0	1-8-0	1-9-0	1-9-6	1-8-2	1-5-6	1-0-5	0-5-7	-
W/L III	0-0-7	0-7-5	1-2-1	1-6-0	1-7-4	1-8-0	1-6-6	1-3-7	0-10-0	0-3-4	-
W/L II	0-0-4	0-3-4	0-9-4	1-2-0	1-5-5	1-4-6	1-3-3	0-11-2	0-5-4	0-1-4	-
W/L I	0-0-4	0-1-0	0-2-4	0-6-2	0-9-2	0-9-4	0-7-6	0-3-3	0-1-0	-	-



BODY PLAN

SINGLE (LETTING) SKIFF Length overall 20'10"
Beam 3' 7 1/2"
Believed built about 1921 at Eton Boat House.
Out of Honduras Mahogany, English Oak & Pitchpine.

Drawing No 101

No 1 of a set of

Scale 3/4 inch = 1 foot

SINGLE SKIFF.
THAMES TRADITIONAL BOAT SOCIETY.

Present owners Mr & Mrs J COX, ETON.

Drawn by E GRANT, WINDSOR, 1980.
copyright reserved